



# INSTALLATION INSTRUCTIONS

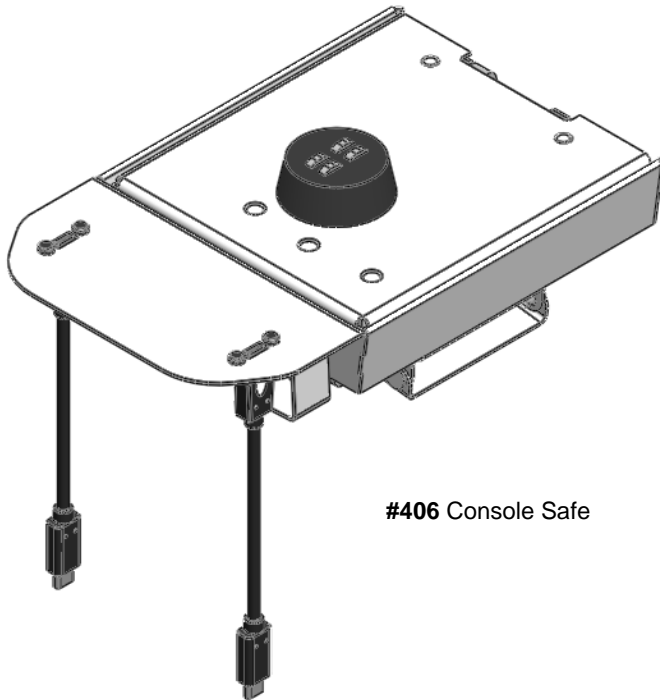
**Console Safe #406-01**  
**2019+ Toyota RAV4 Console Safe**  
See [tuffypromts.com](https://tuffypromts.com) for Fitment Guide

## QC CHECK

\_\_\_\_ SHIP PACK CONTENTS  
\_\_\_\_ VISUAL INSPECTION  
\_\_\_\_ LOCK FUNCTION TEST  
\_\_\_\_ RUBBER SEAL  
\_\_\_\_ SHIPPING PACKAGE  
\_\_\_\_ PLATE BUNDLE

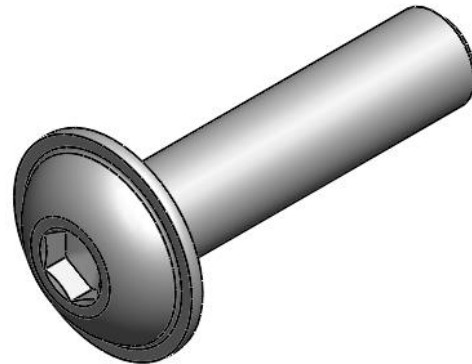
Please read and fill out the enclosed warranty registration card or register online at <https://tuffypromts.com/help/warranty-information/warranty-registration/> to activate your warranty.

## PARTS CHECKLIST



**#406 Console Safe**

## SHIPPING PACKAGE CHECKLIST



**#1 (4) M6 X 25mm  
Flange Head Screw**

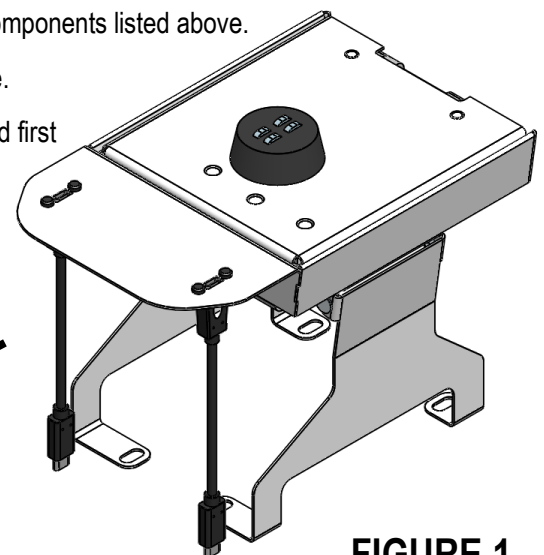
## TOOLS CHECKLIST

- 10mm Socket, 11/32" Socket
- 6mm Allen Wrench

### **PLEASE READ ALL INSTRUCTIONS THOROUGHLY BEFORE STARTING INSTALLATION.**

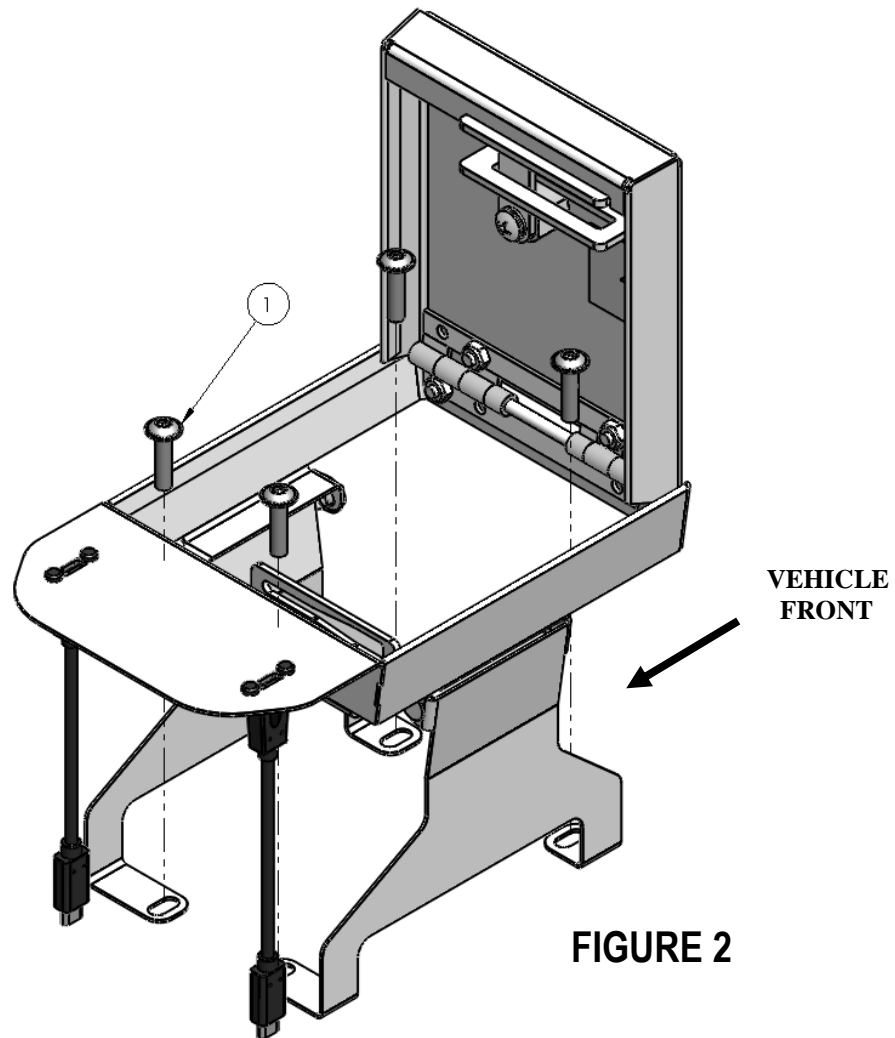
1. Remove all contents from the shipping box and confirm that you have all the components listed above.
2. Using a 10mm socket remove the (4) OEM screws from the floor of the console.
3. Partially unfold the legs and lower into your 406 Console Safe with the back end first into the console.
4. Open the lid and open the legs completely.

**VEHICLE  
FRONT**



**FIGURE 1**

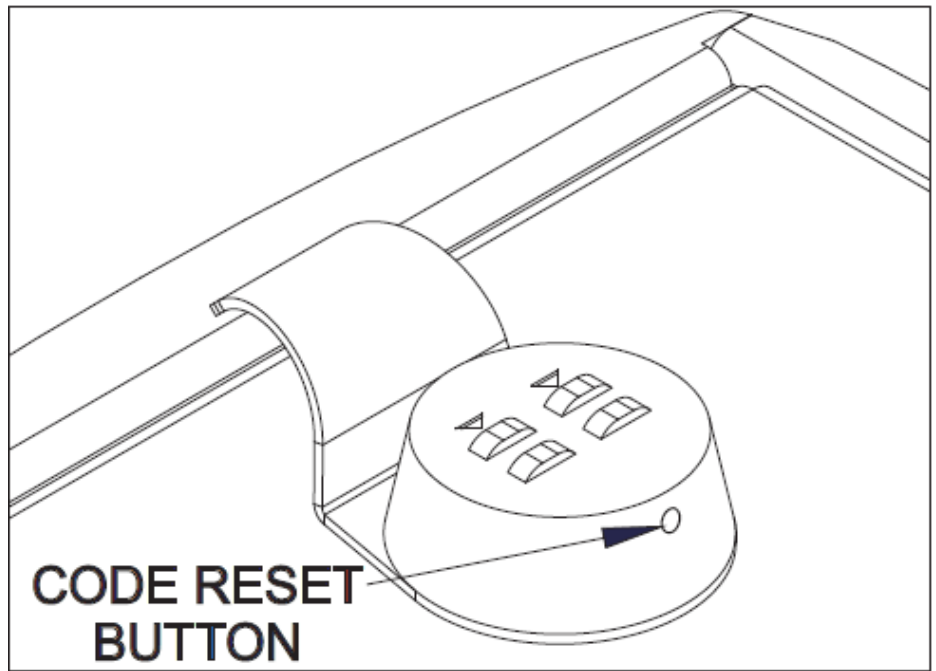
5. Take each end of the USB-C extenders and plug them into the power ports at the front of the console.
6. Insert the (4) #1 M6 Flange Head Screws into the holes in the floor of the console and tighten them down so the feet are flat with the floor of the console.



7. You have successfully installed your console safe.

**8. Instructions for setting your personal combination:**

- A. The combination is factory set at >>0-0-0<<
- B. Combination must be on opening number prior to resetting.
- C. On the underside outer edge of the lock there is a hole for the code reset button. Rotate the face of cam until the code reset button comes into view.
- D. Push the code reset button in with a paper clip and keep it pushed in!
- E. Set your personal combination by turning the dials to the desired combination – starting with the dial marked '1', and moving to '2', '3', and then '4'.
- F. Release the code reset button and your combination is set.
- G. To lock, rotate lock to "locked" position. Rotate one or more dials after lock is closed.
- H. To open the lock, turn dials to your personal combination.



**NOTE:** If you desire, the Combi-Cam can be installed such that it is non-resettable.

**Directions:**

Take off the screw to the cam and remove the cam and the "stop cam"  
Rotate the cylinder 180 degrees and then put the "stop cam" and the cam back on